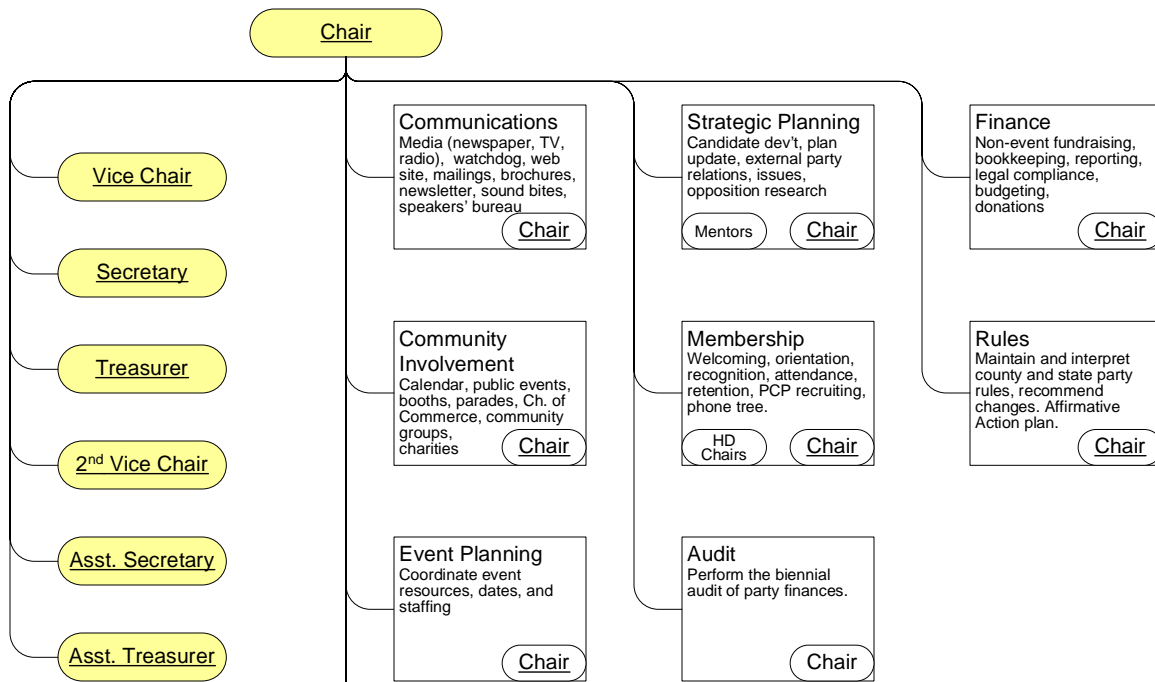


Douglas Democrats Organization Chart



State Central Committee **8 Bonus Members** DougCo Officers
Chair, Vice Chair

JD18 Central Committee Multi-County
Judicial District 18 - Oversees District Attorney campaigns
8 Bonus Members DougCo Officers Executive Committee
Chair, Vice Chair Chair, Vice Chair, Secretary, Extra

CD6 Central Committee Multi-County
Congressional District 6 - Oversees US Congressional, CU Board of Regents, and State Board of Education campaigns
8 Bonus Members DougCo Officers Executive Committee
Chair, Vice Chair Chair, Vice Chair, Secretary, Extra

County Campaign Committee
Chair

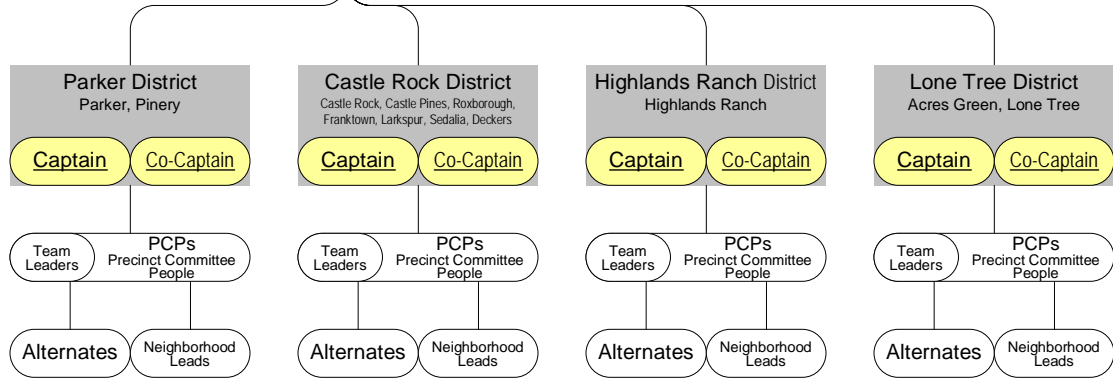
SD30 Central Committee
Senate District 30 - Oversees State Senate campaigns
DougCo Officers * PCPs Executive Committee
Chair, Vice Chair, Secretary Chair, Vice Chair, Secretary, Extra

SD04 Central Committee Multi-County
Senate District 4 - Oversees State Senate campaigns
DougCo Officers * Executive Committee
Chair, Vice Chair, Secretary Chair, Vice Chair, Secretary, Extra

HD43 Central Committee
House District 43 - Oversees State Representative campaigns
DougCo Officers * PCPs Executive Committee
Chair, Vice Chair, Secretary Chair, Vice Chair, Secretary, Extra

HD44 Central Committee
House District 44 - Oversees State Representative campaigns
DougCo Officers * PCPs Executive Committee
Chair, Vice Chair, Secretary Chair, Vice Chair, Secretary, Extra

HD45 Central Committee Multi-County
House District 45 - Oversees State Representative campaigns
DougCo Officers * Executive Committee
Chair, Vice Chair, Secretary Chair, Vice Chair, Secretary, Extra



Each precinct has 2 PCPs, normally elected at the Democratic Caucus in April of even-numbered years. All become members of the Central Committee. Between caucuses, PCP vacancies are filled by the House District Chairs, with consent of the County Chair and the County Central Committee. Alternates and Neighborhood Leads are informal positions not covered by the county rules. PCPs decide how to organize their precincts.

* Only officers who live in the district. In SD4 and HD45, the Douglas County Chair appoints replacements for any officers who do not live in the district, based on a vote of PCPs living in the district. Multi-County Committee Chairs who don't live in Douglas County can appoint a Douglas County resident to the county Executive Committee.

Key: Person Committee Underlined people become members of the Executive Committee. **Shaded** people are elected at the Reorganization Meeting, in February of odd-numbered years.

